



Integrity at work.™

# Tools & Accessories

Specifications Subject To Change Without Notice

# TABLE OF CONTENTS

---

	Page
Tool Kits	
Model M-1 "Pig"®	1
Outlaw B/V	1
Pacers/Marshalls	2
Pacer 30	2
BP/Ranger	2
Colts	2
Designer Dry	3
Designer Wet/Dry	3
Stallion 8SC	3
Pony 20 SCA	3
Predators	3
Wranglers®	3
Hoses & Hose Accessories	4
Cuffs, Couplings & Connectors	4
Wands, Extension Tubes, Carpet Tools	5
Floor Tools	5, 6
Floor Tools and Replacement Parts	6
Specialty Cleaning Tools	7
Filters & Filter Bags	8
55 Gallon Drum & Misc. Accessories	9
Floor Machine Brushes	10
Pad Drivers	10
Clutch Plates	10
Floor Machine Accessories	10
Battery Burnisher Accessories (Sulky)	10
Pad Cups	10
Automatic Scrubber Accessories	11
Pressure Washer Accessories	12
Floor Pads	13

---

## **Warranty**

### **10-Year Limited Warranty On NSS-Made Tools.**

The cast-aluminum tools with brass swivels and collars are warranted for 10 years against defects in material and workmanship.

# TOOL KITS

## For Model M-1 "Pig" Portable Vacuums



**#3093619**

**#3093619**

Basic Carpet Kit includes:

- 2595101 One 1/2" x 10' Super Flex Hose
- 2290409 Aluminum Wand
- 3097079 12" Plain Shod Shoe

**#3093759**

Dry Pick-Up Carpet & Dusting Kit includes:

- 2595101 One 1/2" x 10' Super Flex Hose
- 2290409 Aluminum Wand
- 3091079 12" Carpet Tool w/ Milled Manganese Shoe
- 3092281 12" Plastic Crevice Tool
- 2291211 5" Aluminum Connector
- 3091859 3" Round Dusting Brush



**#3093909**

**#3093909**

Deluxe Dry Carpet & Overhead Cleaning Kit includes:

- 3097009 12" Lint Lifter Carpet Tool
- 2595101 One 1/2" x 10' Super Flex Hose
- 3092311 28" Crevice Tool
- 3091989 7" Shelf Brush
- 2291109 Hi-Up Extension Tube Kit
- 2290409 Aluminum Wand
- 3091859 3" Round Dusting Brush
- 2291211 5" Aluminum Connector



**#3093759**

**#3093959**

Deluxe Chapel Cleaning Kit includes:

- 2290409 Aluminum Wand
- 2291119 5' Extension Tube w/ Sleeve
- 2291129 5' Extension Tube w/ Elbow
- 2291211 5" Aluminum Connector
- 2595101 10' Super Flex Hose
- 3090209 7" Upholstery Tool
- 3091769 9" Wall Brush
- 3091859 3" Round Dusting Brush
- 3092311 28" Crevice Tool - Plastic
- 3097109 16" Lint Lifter Tool



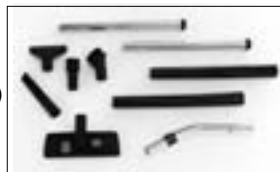
**#3093959**

## For Outlaw B/V Back-Pack Vacuums

**#6797059**

Detail Tool Kit includes:

- 5797181 3-Piece Wand
- 5790321 Hi-Up Extension Tube Kit - Plastic (2-Piece)
- 5790311 Utility Nozzle
- 5790111 2 1/2" Round Brush
- 5790171 5" Upholstery Tool
- 5790291 Crevice Tool
- 5790131 12" Combo Carpet/Bare Floor Tool



**#6797059**

Outlaw B/V Aircraft Tool Kit includes:

- 2290309 Aluminum Wand - Short
- 3091039 12" Carpet Tool - Aluminum Shoe
- 3092323 28" Aluminum Crevice Tool

**#6790141**

Lite Carpet & Dusting Kit includes:

- 6790161 2-Piece Wand
- 6790151 14" Carpet & Bare Floor Tool
- 6790171 16" Crevice Tool
- 6790181 3" Round Brush



**#6790141**



**B/V Aircraft Tool Kit**

**#6790069**

Open Area Tool Kit includes:

- 3097099 16" Carpet Tool w/ Plain Shoe
- 2290309 Aluminum Wand - Short
- 2291211 5" Aluminum Connector
- 3091859 Round Brush w/ Nylon Bristles
- 3092311 28" Crevice Tool - Plastic



**#6790069**

# TOOL KITS

## For Pacer / Marshall 14/18 Upright Vacuums

#6892059

**Marshall 14/18 Tool Kit includes:**

- 6890251 Upholstery Tool
- 6890261 Crevice Tool
- 7293361 2-Position Round Brush Tool
- 7293351 Hi-Up Extension Tube



#6892059

## For Pacer 30 Wide Area Vacuum

Replacement Tools for the Pacer 30 with On-Board Hose-And-Wand Only.

#3191039

**Pacer 30 Tool Kit**

- 3191469 2-Pc. Hi-Up Wand
- 5790311 Reducer Tube
- 5790111 Round Brush
- 5790291 Crevice Tool



#3191039

## For BP Ranger & Colt Wet/Dry Vacuums



#3093709

#3093709

**Bare Floor Tool Kit includes:**

- 2290409 Aluminum Wand
- 2595101 One 1/2" x 10' Super Flex Hose
- 3092179 14" Squeegee Tool
- 3091409 14" Bare Floor Tool w/ Felt Front & Bristle Rear



#3098329

#3093809

**Carpet & Bare Floor Tool Kit includes:**

- 2290409 Aluminum Wand
- 2595101 One 1/2" x 10' Super Flex Hose
- 2291211 5" Aluminum Connector
- 3090109 4" Upholstery Tool
- 3091039 12" Carpet Tool w/ Plain Aluminum Shoe
- 3091859 3" Round Dusting Brush
- 3092179 14" Squeegee Tool
- 3092281 12" Crevice Tool



#3093809

#3098309

**All-Purpose Wet/Dry Tool Kit includes:**

- 2594011 10' Spiral Flex Hose
- 5790331 2-Piece Steel Wand
- 5797011 15" Squeegee Tool w/ Wheels
- 5790241 16" Bare Floor Tool - **FSO\*** - use 5797021
- 5797031 15" Carpet Tool w/Wheels
- 5790111 2 1/2" Round Brush
- 5790291 Crevice Tool
- 5790301 9" Wall Brush
- 5790311 Utility Nozzle
- 3191469 Hi-Up Extension Tube Kit - Plastic (2-Piece)



#3093009

#3098329

**Basic Wet Pick-Up Kit includes:**

- 3092179 14" Urethane Squeegee Tool
- 2290209 Steel Wand
- 2595101 10' Super Flex Hose w/ Swivel Cuff



#3098309

#3093009

**Industrial Tool Kit includes:**

- 2290409 Aluminum Wand
- 2594011 10' Spiral Flex Hose
- 3092179 14" Squeegee Tool w/Urethane Blades
- 3091349 14" Tool w/ Fabric Front/Bristle Rear
- 3091259 12" Gulper Tool w/ Fabric Shoe
- 2291109 Hi-Up Extension Tool Kit
- 3091769 9" Wall and Overhead Brush w/ Nylon Bristles
- 3091859 3" Round Brush w/Nylon Bristles



#3098259

#3098259

**Front Mount Squeegee Kit for BP Ranger & Colt**

# TOOL KITS

## For Designer Dry & Wet/Dry Vacuums

### #5790061

#### Designer Dry Tool Kit includes:

- 5790101 7' x 1 1/4" Hose
- 5790131 Carpet & Bare Floor Tool
- 5790111 2 1/2" Round Brush
- 5790121 Crevice Tool
- 5790171 Upholstery Tool
- 5797181 3-Piece Steel Wand - 1 1/4" Dia.



#5790061

### #5797051

#### Designer 4 Wet/Dry Tool Kit includes:

- 5790131 Carpet & Bare Floor Tool
- 5797061 8' x 1 1/2" Hose
- 5790111 2 1/2" Round Brush
- 5790121 Crevice Tool
- 5790171 Upholstery Tool
- 5797181 3-Piece Wand - 1 1/2" Dia.
- 5797211 17" Squeegee Tool w/ Swivel Elbow



#5797051

### #5797071

#### Designer 7/16 Wet/Dry Tool Kit includes:

- 5797061 8' x 1 1/2" Hose
- 5797011 15" Squeegee Tool w/ Wheels
- 5797021 15" Bare Floor Tool w/ Wheels
- 5797031 15" Carpet Tool w/ Wheels
- 5790111 2 1/2" Round Brush
- 5790291 Crevice Tool
- 5790301 9" Wall Brush
- 5790331 2-Piece Steel Wand
- 3191469 Hi-Up Extension Tube Kit - 2pc.
- 5790311 Utility Nozzle



#5797071

## For Stallion 8SC & 12 SC, Pony 20 SCA, Predators

### #4892859

#### Upholstery Kit includes:

- 4097501 4" Upholstery Tool, 50-300 PSI
- 2598551 15' Vacuum Hose
- 4098021 15' Solution Hose (Fem. To Fem. Quick Disconnect - Low Pressure)



#4892859

### #4892869

#### Detail 3-Jet Wand Kit includes:

- 4097101 3-Jet Wand, 12" Width, 50-800 PSI
- 2598551 15' Vacuum Hose
- 4098021 15' Solution Hose (Fem. To Fem. Quick Disconnect - Low Pressure)



#4892869

## For Predator CX3 Spotter

### #4098319

#### Predator Hand Tool & Hose Kit includes:

- 4097011 Plastic Detail Tool w/ Metal Valve
- 4098239 10' Solution Hose
- 4098209 10' Recovery Hose



#4098319

### #4098069

#### For Predator Models Only

#### All-Purpose Kit includes:

- 4097101 3-Jet Wand
- 4097301 Single Jet Stair Wand
- 4097601 3 1/2" Detail Tool



#4098069

### #4098079

#### For Predator Models Only

#### Car Detail Kit includes:

- 4097601 3 1/2" Detail Tool
- 4097301 Single Jet Stair Wand
- 4098031 8" Crevice Tool



#4098079

## For Wrangler & Champ Automatic Scrubbers

### #2392179

#### Brush/Squeegee Kit for all Wranglers® includes:

- 2290209 Steel Wand
- 2291211 5" Aluminum Connector
- 2391231 7' Vacuum Hose
- 3097849 14" Brush/Squeegee Tool



#2392179

### #2392129

#### Wet Pick Up Tool Kit includes:

- 5790331 2-piece Steel Wand
- 2391231 7' Vacuum Hose
- 5797011 15" Squeegee Tool w/Wheels
- 2291211 5" Aluminum Connector



#2392129

# HOSES & HOSE ACCESSORIES

## Wet/Dry Vacuum Hoses

All hoses can be used for wet and dry pickup.

*Spiral Flex Hose is lightweight, crush proof, and non-marking.*

- #2594011 1 1/2" x 10' Spiral Flex Hose
- #2594251 1 1/2" x 25' Spiral Flex Hose
- #2594491 1 1/2" x 50' Spiral Flex Hose

*Neoprene Hose is heavy duty weight with wire reinforcements. Neoprene cover withstands heat and deterioration from grease & oil.*

- #2595011 1 1/2" x 10' Neoprene Covered Hose

*Super Flex Hose is lightweight, crush proof and non-marking with wire reinforcements.*

- #2595071 1 1/2" x 7' Super Flex Hose
- #2595101 1 1/2" x 10' Super Flex Hose
- #2598219 2" x 10' Super Flex Hose

*For Bandit B/V Only.*

- #4891491 Bandit B/V Vacuum Hose

*For Outlaw B/V Only.*

- #6793251 Outlaw B/V Vacuum Hose
- #6790241 Outlaw B/V Vacuum Hose-Longer

*For Designer Dry Only.*

- #5790101 1 1/4" x 7' Hose

*For Designer 4, 7 & 16 Only.*

- #5797061 1 1/2" x 8' Hose

*For Warhorse Vac-Trac Only.*

- #6591971 2" x 54"

**Did you know that...**

*our Spiral Flex, Neoprene and Super Flex hoses have increased (actual 1 5/8" interior diameter) to prevent clogging?*



Example - Vacuum Hose

## Extractor Hoses

*For Pony 20SCA, Stallion 8SC & Predator Machines.*

- #2598551 15' Vacuum Hose Clear
- #4095461 15' Vacuum Hose Black
- #2594251 25' Vacuum Hose
- #4098021 15' Solution Hose, Low Pressure (Female/Female Quick Disconnect)
- #3891581 15' Solution Hose, Low Pressure (Male/Male Quick Disconnect)
- #3890991 15' Solution Hose, Low Pressure (Female/Male Quick Disconnect)
- #3890981 25' Solution Hose, Low Pressure (Male/Male Quick Disconnect)
- #4097111 Adaptor (Female/Female Quick Disconnect)
- #4098089 15' Solution Hose Extension Kit (Includes:)

- 2598551 15' Vacuum Hose
- 3890991 15' Solution Hose, Low Pressure (Female/Male Quick Disconnect)
- 2291211 5" Connector To Connect Vacuum Hoses

- #4098011 15' Solution Hose, High Pressure - 310 PSI (F/F Quick Disconnect) - PREDATOR MODELS ONLY
- #4090301 25' Solution Hose, High Pressure - 310 PSI (F/F Quick Disconnect) - PREDATOR MODELS ONLY
- #4090311 50' Solution Hose, High Pressure - 310 PSI (F/F Quick Disconnect) - PREDATOR MODELS ONLY



Example - Solution Hose

## Hose Couplings, Connectors, & Cuffs

- #2590019 1 1/2" Swiveled Hose Coupling - For attaching 1 1/2" hose to intake on Model M-1.
- #2590801 1 1/2" Hose Coupling - For attaching 1 1/2" hose to intake on BP-Ranger & Colt.
- #2590111 Hose Coupling Gasket - For swiveled hose coupling #2590019.
- #5790021 Hose Coupling - For use with Designer hoses #5790101 & #5797061.
- #2590309 1 1/2" Extension Hose Connector - Connects 1 1/2" hoses together.
- #2590349 Reducer Cuff - For attaching 2" Hose to 1 1/2" Wand.
- #2291211 5" Aluminum Connector - Adapts hand/dusting tools to any 1 1/2" hose.
- #5790311 Utility Nozzle - For adapting 57 series tools to hose.
- #2590351 Hose End Blank - Reduces the 1 3/4" coupling end of hose to 1 1/2" I.D. Use to attach NSS hoses on other Mfgs. machines.
- #2599601 1 3/4" Hose Cuff - Coupling End - For use with hoses #2594011, #2594251, #2594501.
- #2599611 1 1/2" Hose Cuff - Wand End - For use with hoses #2594011, #2594251, #2594501.
- #2590361 1 1/2" Hose Cuff - Wand End - For use with hoses #2598071, #2598101, #2598551.
- #2590371 1 3/4" Hose Cuff - Coupling End - For use with hoses #2595071, #2595101, #2598071, #2598101, #2598551.
- #2595111 Swivel Cuff Replacement - For use with hoses #2595071 & #2595101.
- #5797081 1 1/2" Wand Hose Cuff - For Designer hose #5797061.
- #5797091 Intake Hose Cuff - For Designer hose #5797061.



#2590019



#2590801



#5790021



#2590349

# WANDS, EXTENSION TUBES, & CARPET TOOLS

## Vacuum Wands & Replacement Parts

- #2290209 1 1/2" x 5' 2-Bend Steel Wand - *Heavy duty plated steel for both wet and dry pick-up.*
- #2290309 1 1/2" x 4 1/2' 2-Bend Aluminum Short Handle Wand - *Compact construction ideal for close quarter operation. Wet and dry pick-up.*
- #2290409 1 1/2" x 5' 2-Bend Aluminum Wand - *Lightweight, heavy duty for both wet and dry pick-up.*
- #2290021 Replacement Male Lock - *For 1 1/2" wands.*
- #5797181 3-Piece Steel Wand - *1 1/2" Dia.*
- #5790331 2-Piece Steel Wand - *For Designer 7 & 16, BP-Ranger, & Colt.*
- #5790181 3-Piece Steel Wand - *1 1/4" Dia.*

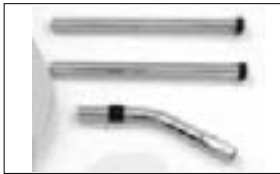


Example - 2-Bend Wand

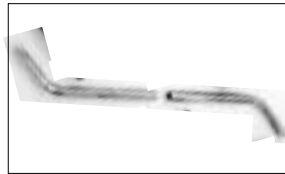
## Vacuum Extension Tubes & Replacement Parts

For cleaning ceilings, walls, draperies, etc.

- #2291109 Hi-Up Extension Tube Set - *Includes one tube with sleeve and one with elbow. For 10' additional reach.*
- #2291119 5' Extension Tube w/ Sleeve - *Used between a 1 1/2" hose and a Hi-Up tube with elbow (#2291129) for additional reach.*
- #2291129 5' Extension w/ Elbow - *One end fits any 1 1/2" hose. Elbow end fits dusting tools.*
- #2291136 Replacement Extension Tube Sleeve
- #2291141 Replacement Extension Tube Elbow(45°)
- #3191469 Plastic Hi-Up Extension Tube Kit (2-Piece) - *For use with Designer 7 & 16, Outlaw B/V, BP-Ranger, Colt & Pacer 30.*
- #7293351 Hi-Up Extension Tube - *For Marshall 14/18 only.*



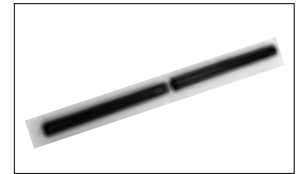
#5797181



#5790331



#2291109



#3191469

## Carpet Tools, Shoes, & Bumpers for 1 1/2" Wand

For Low Profile (short height), Tight Weave - Commercial Type Carpeting:

- #3091039 12" Carpet Tool w/ Aluminum Shoe - *Lightweight, heavy duty, general purpose tool.*
- #3091052 Replacement 12" Aluminum Shoe - *For #3091039 carpet tool.*
- #3091079 12" Carpet Tool w/ Milled Zinc Aluminum - *Milled shoe provides combing action and allows greater outside air flow. For close cut pile carpets.*
- #3091082 Replacement 12" Milled Zinc Aluminum Shoe - *For #3091079 carpet tool.*
- #3092139 12" Carpet Tool w/ Zinc Aluminum Shoe - *Heavy weight allows deeper penetration into carpet nap.*
- #3092146 Replacement 12" Zinc Aluminum Shoe - *For #3092139 carpet tool.*
- #3093209 12" Carpet Tool w/ Milled Aluminum Shoe - *Milled shoe provides combing action and allows greater outside air flow. For close cut pile carpets.*
- #3093212 Replacement 12" Milled Aluminum Shoe - *For #3093209 carpet tool.*
- #3091041 Replacement 12" Round Bumper - *For tools with aluminum or zinc aluminum shoes.*

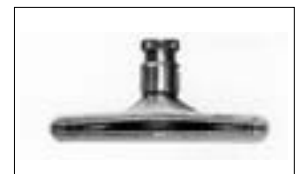
For Use On All Types Of Carpet. Particularly good for plush cut piles, loop, & sculptured.

Use 12" Carpet Tools #3097009, #3097959, or 16" 3097109 for removal of lint or hair.

- #3097009 12" Carpet Tool Lint Lifter - *For cut pile carpet.*
- #3097069 12" Replacement Set Lint Lifter Shoes - *For #3097009 carpet tool.*
- #3097079 12" Carpet Tool w/ Plain Shoes - *For loop or deep pile carpet.*
- #3097089 12" Replacement Set Plain Shoes - *For #3097079 carpet tool.*
- #3097099 16" Carpet Tool w/ Plain Shoes - *For loop or deep pile carpet.*
- #3097179 16" Replacement Set Plain Shoes - *For #3097099 carpet tool.*
- #3097109 16" Carpet Tool Lint Lifter - *For cut pile carpet.*
- #3097169 16" Replacement Set Lint Lifter Shoes - *For #3097109 carpet tool.*
- #3097021 12" Replacement Bumper - *For #3097009 & 3097079 carpet tools.*
- #3097121 16" Replacement Bumper - *For #3097099 & 3097109 carpet tools.*
- #3097959 12" Carpet Lint Tool w/ Nylon Bristle Insert on Rear Shoe
- #3097906 Brush Retainer - *For #3097959 carpet tool.*
- #3097911 Brush - *For #3097959 carpet tool.*
- #3097921 Brush Spring - *For #3097959 carpet tool.*



#3091039



#3091079



#3097009



#3097079



#3093209



#3092139

# FLOOR TOOLS & TOOL REPLACEMENT PARTS

## Bare Floor Tools - Dry Pick-Up Only for 1 1/2" Wand

### For General Purpose Clean Up

- #3091299 14" Tool w/ Fiber Shoes - For cleaning concrete or other rough, abrasive floors.
- #3091302 Replacement Set 14" Fiber Shoes - For #3091299 bare floor tool.
- #3091369 14" Tool w/ Felt Shoes - For polished or waxed floors.
- #3091379 Replacement Set 14" Felt Shoes - For #3091369 bare floor tool.
- #3091389 14" Tool w/ Nylon Bristle Shoes - For loosening dirt and dust accumulations.
- #3091399 Replacement Set 14" Bristle Shoes - For #3091389 bare floor tool.
- #3091349 14" Tool w/ Fiber Front/Nylon Bristle Rear - For warehouse floors.
- #3091359 Replacement Set 14" Fiber Front/Nylon Bristle Rear Shoes - For #3091349 bare floor tool.
- #3091409 14" Tool w/ Felt Front/Nylon Bristle Rear Shoes - For waxed or polished areas with dirt or dust accumulations.
- #3091419 Replacement Set 14" Felt Front/Nylon Bristle Rear Shoes - For #3091409 bare floor tool.
- #3091441 Replacement 14" Bumper - For 14" bare floor tools.
- #3091452 Replacement 14" Bumper Retainer.

## Bare Floor Tools - Wet Pick-Up Tools for 1 1/2" Wand

- #3092179 14" Squeegee Tool w/ Linatex Blades - For general purpose wet pick-up.
- #3098349 Replacement Set of 14" Linatex Blades - For #3092179 squeegee tool.
- #3092209 Replacement Set of 14" Holding Strips - For #3092179 squeegee tool.
- #4098101 12" Double-Blade Wand.
- #3092249 18" Squeegee Tool w/ Linatex Blades - For general purpose wet pick-up.
- #3098389 Replacement Set of 18" Linatex Blades - For #3092249 squeegee tool.
- #3092269 Replacement Set of 18" Holding Strips - For #3092249 squeegee tool.

## Gulper Tools

### For Pick-Up of Large Objects

- #3091279 12" Gulper Tool w/ Fabric Shoe - For general purpose pick-up of large objects on tile floors (popcorn, paperwads, etc.).
- #3091282 Replacement 12" Fabric Shoe - For #3091279 gulper tool.
- #3091259 12" Gulper Tool w/ Cast Iron Shoe - For heavy duty pick-up of large objects on concrete.
- #3091262 Replacement 12" Cast Iron Shoe - For #3091259 gulper tool.

## Replacement Parts for 1 1/2" Floor Tools

- #3090031 Replacement Threaded Female Lock
- #3090041 Replacement Spring Clip
- #3090061 Replacement Brass Swivel
- #3090029 Replacement Swivel Assembly - Includes #3090031, #3090041, & #3090061
- #3090081 Replacement Outside Brass Male Swivel



#3091299



#3091369



#3091389



#3091349



#3091409



#3092179, 3092249



#3097849



#3091279



#3091259



# SPECIALITY CLEANING TOOLS

## Crevice Tools

For narrow cracks and other hard to reach places - inserts directly into hose.

- #3092281 1 1/2" x 12" Plastic Crevice Tool - For 1 1/2" hoses.
- #3093191 1 1/2" x 12" Aluminum Crevice Tool - For 1 1/2" hoses.
- #3092311 1 1/2" x 28" Plastic Crevice Tool - For 1 1/2" hoses.
- #3092322 1 1/2" x 28" Aluminum Crevice Tool - For 1 1/2" hoses.
- #5790121 Crevice Tool - For Designer Dry & Designer 4.
- #6790171 16" Crevice Tool - For Outlaw B/V.
- #6890261 Crevice Tool - For Marshall 14 & 18.



#3092311

## Dusting Tools for Wall, Shelf, & Upholstery

With Nylon Bristles. Connect to hose with #2291211 or hi-up tube w/ elbow #2291129.

- #3091859 3" Round Brush - For venetian blinds and general dusting.
- #3091861 Replacement 3" Round Nylon Bristle Insert - For #3091859 round brush tool.
- #3091831 Replacement Base & Bumper - For #3091859 round brush tool.
- #3091719 7" Dusting Tool - General dusting tool for benches, bins, and shelves - FSO\* - Substitute 3091989
- #3091731 Replacement 7" Nylon Bristle Insert - For #3091719 dusting tool and #3091989 shelf brush.
- #3091721 Replacement 7" Bumper - For #3091719 dusting tool.
- #3091769 9" Wall Brush - For cleaning walls, ceilings, and draperies.
- #3091781 Replacement 9" Nylon Bristle Insert - For #3091769 wall brush.
- #3091771 Replacement Bumper - For #3091769 wall brush.
- #3091989 7" Shelf Brush - For general shelf dusting.



#3091859



#3091719

## Overhead Pipe Cleaning Tools - FSO\*

Attach to hi-up tube w/ elbow #2291129.

- #3091919 Concave Brush Tool w/ Bristle Insert - For 1" to 3" diameter pipes.
- #3091921 Replacement Bristle Insert - For #3091919 concave tool.
- #3091939 Concave Brush Tool w/ Bristle Insert - For 4" to 6" diameter pipes.
- #3091941 Replacement Bristle Insert - For #3091939 concave tool.
- #3091959 Concave Brush Tool w/ Bristle Insert - For pipes over 6" diameter.
- #3091971 Replacement Bristle Insert - For #3091959 concave tool.



#3091989



#3091919

## Upholstery Tools

Attach to 1 1/2" hose with #2291211

- #3090109 4" Upholstery Tool
- #3090209 7" Upholstery Tool

## Non-Standard Size NSS Floor, Dusting, Speciality Tools, & Replacement Parts

For use with Designer Line, Outlaw B/V, BP-Ranger, & Colt machines.

- #5797031 15" Carpet Tool w/ Wheels - For use with Designer 7 & 16.
- #5790131 10" Combination Carpet/Bare Floor Tool - For use with Outlaw B/V, Designer Dry, Designer 4.
- #6790151 14" Carpet/Bare Floor Tool - For use with Outlaw B/V.
- #5790241 16" Bare Floor Tool - For use with BP-Ranger & Colt. FSO\* - use 5797021.
- #5797021 15" Bare Floor Tool - For use with Designer 7 & 16.
- #5797011 15" Squeegee Tool w/ Wheels - For use with Designer 7 & 16, BP-Ranger & Colt.
- #5797171 Replacement 15" Squeegee Blades - For #5797011 squeegee tool.
- #5797211 17" Squeegee Tool w/ Swivel Elbow - For use with Designer 4.
- #5790229 Replacement 17" Squeegee Blades - For #5797211 squeegee tool.
- #5790111 2 1/2" Round Brush Tool - For use with Designer Line, Outlaw B/V, BP-Ranger, & Colt.
- #5790121 Crevice Tool - For use with Designer Dry & Designer 4.
- #5790171 5" Upholstery Tool - For use with Designer Dry, Designer 4, & Outlaw B/V. FSO\*.
- #5790301 7" Wall Brush - For use with Designer 7 & 16, BP-Ranger, & Colt.
- #5790021 Hose Coupling - For adapting standard NSS 1 1/2" hoses & tools to Designer Line vacuums.



#3090109



#5797031



#5790131



#6790151



#5797011



#5797211

\*FSO - Final Stock Out. May Not Be Available - Once Current Stock Is Depleted, No Longer Available.

# FILTERS & FILTER BAGS

## Model M-1 "Pig"® Portable Vacuum

- #1093011 Model M-1 Universal Black Filter Bag
- #1098861 6-Pack Paper Micro Filter Bags



#1093011

## Outlaw B/V Back-Pack Vacuum Outlaw B/V HEPA

- #6790091 10-Pack Paper Micro Filter Bags
- #6790121 Cloth Filter Bag
- #6793031 Exhaust Filter
- #6790351 Motor Filter
- #6793459 Snap-On HEPA Filter Assembly
- #6793111 Hepa Filter



#6790121

## Marshall / Pacer Upright Vacuums

- #6890241 10-Pack Micro Paper Filter Bags
- #6892001 Cloth Filter Bag
- #6892011 5-Pack Synthetic Cloth Micro-Filter Bags - For use with Micro-Filter #6890171
- #6890171 Micro-Filter Assembly - Frame and Cloth Filter
- #6890161 Safety Filter
- #6890471 Exhaust Filter



#6793459

## Pacer 30 Vacuum

- #3290291 Cloth Bag
- #3190791 6-pack Paper Micro Filter Bags
- #3190331 Exhaust Filter
- #3291121 Fan Filter

## Pacer PB

- #6990669 Filter and Gasket Kit, includes Filter and Canister-To-Filter Gasket
- #6991119 Filter Cup and Gasket Kit, includes Filter Cup and Cup-To-Canister Gasket
- #6991131 HEPA Filter (replaces final foam filter)

## BP Ranger & Colt Wet/Dry Vacuums

- #0891939 Dynel Filter Assembly - White Synthetic. For wet & dry use.
- #0891949 Blue Cotton Filter Assembly - For dry use only.
- #0892171 16" Paper Filter - Elastic top - provides additional filtration.



#6892001

## Colt HEPA Wet/Dry Vacuums

- #0891909 HEPA Filter Mount Assembly
- #0892199 Micro Filter Assembly w/ Stand - Ready to install.
- #0891291 HEPA Filter Only
- #0892171 16" Paper Filter - Elastic top - provides additional filtration.
- #0892161 Micro Filter Bag



#6890171

## Designer Dry Vacuum

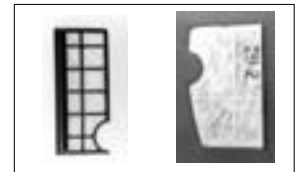
- #5796101 5-Pack Paper Filter Bags
- #5791521 Filter Assembly

## Pacer 30 HEPA

- #6793111 HEPA Filter Only
- #3190739 HEPA Filter Retrofit

## Designer Line Wet/Dry Vacuums

- #5793341 Designer 4 Filter Assembly - Includes bag ring, stand, & filter bag.
- #5795001 Designer 7 Filter Assembly - Includes bag ring, stand, & filter bag.
- #5795281 Designer 16 Filter Assembly - Includes bag ring, stand, & filter bag.



#6890161 & #6890471

## Charger 2025, 2716 AB & 2716 DB Plus Battery Burnishers

- #5796101 5-Pack Paper Filter Bags
- #6592801 Cloth Bag



#3290291

## Warhorse / Commander Vac-Trac Propane Burnishers

- #6592801 Cloth Filter Bag - Warhorse
- #6190051 Cloth Filter Bag - Commander



#5791521



#6795001



#0891939 & #0891949

# 55 GALLON DRUM & MISC. ACCESSORIES

## Single Motor Power - Internal Filter For 55 Gallon Drums

The following items are required to complete a 55 gallon drum set-up. Please note: NSS does not supply 55 gallon drums.

Qty Required	Part #	Description
Choose 1	#1801802	BP-Ranger Powerhead
	#0800802	Colt Powerhead
Choose 1	#0891939	Dynel Filter Bag (Wet/Dry Pick-Up)
	#0891949	Blue Cotton Filter Bag (Dry Pick Up Only)
1	#5592309	Adaptor Cover for BP-Ranger
1	#2590801	1 1/2" Hose Coupling
Optional	#5593761	Dolly for 55 Gallon Drum
Replacement	#5592071	Replacement Gasket for #5592309



#1801802



#0800802

## Miscellaneous Accessories

#1601604 16" Powerwand - For use with: Model M-1 (Model #1001040)  
Outlaw B/V (Models #6706704, #6706710)  
Designer Dry (Model #5705704)

## Pacer PB Cordless PacVac

- #6990501 Battery Pack (2 Required Per Set)
- #6990511 Battery Charger
- #6991179 Battery/Charger Tray (with handle)
- #6990471 Combination Floor Tool
- #6990541 Round Brush Tool
- #6990491 Crevice Tool
- #6990791 Barrel-Mount Accessory Skirt
- #6990781 Barrel-Mount Hanger (2 required)
- #6990801 Barrel-Mount Hose, one 1/4" x 10'

## Model M-1 "Pig"® Portable Vacuum

#1094889 Satellite Bumper

## Designer 16 Wet/Dry Vacuum

#5795341 24" Front Mount Squeegee

## Carpet Extractor Accessories (Male Quick Disconnect)

- #4097101 12" 3-Jet Wand - 50/800 psi
- #4097201 12" 2-Jet Wand - 50/800 psi
- #4097301 9 3/4" Single-Jet Stair Wand - 50/500 psi
- #4097401 6" Stair Tool - 50/300 psi
- #4097501 4" Upholstery Tool - 50/300 psi
- #4097601 3 1/2" Detail Tool - 50/400 psi
- #4098031 8" Flattened Internal Spray Crevice Tool - 50/400 psi
- #4098101 12" Squeegee w/ Wand - 50/300 psi
- #4097851 Replacement Blade
- #4991729 Coil Hose With Spray Gun, Low Pressure (Fem. Quick Disconnect)



#5593761



#5592309



#1601604

## Predator CX3 Carpet-Spotter Accessories

#4098319 Complete Hose & Hand Tool Assembly



#6790229



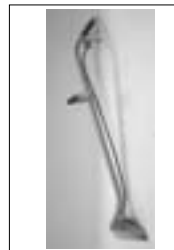
#1094889

## Aero Plus 3-Speed Dryer

#4792169 Optional Carpet Clamp

## Charger 1500 Electric Burnisher

#5294449 Wheel Carriage



#4097101



#4097401

## Warhorse / Commander Propane Burnisher

#6590101 Replacement Tank - Warhorse  
#6190381 Replacement Tank - Commander #6590801 3 Tank Cage

## Outlaw B/V

#6790229 Paddle Tool #6797169 Blower Assembly Kit



#6797169



#5294449

## Sweeper Accessories

MANTA RS 36      SIDEWINDER BP 30  
#6291341 #6296501 Optional White PPL Main Brush  
#6291351 #6296511 Optional Natural Fiber Main Brush  
#6291361 #6296531 Standard Nylon Bristle Main Brush

# FLOOR MACHINE ACCESSORIES

## 17" And 20" Pad Drivers - High Speed (300 RPM) w/ Rubber-Riser

- #2897551 17" High Speed Pad Driver  
(Fits Maverick 300 & Mustang 300 DS)  
#2892551 20" High Speed Pad Driver  
(Fits Maverick 300 & Mustang 300 DS)

All Brushes Have  
Clutch Plates



#2892551

## 15" Pad Drivers & Brushes

- #2895211 15" Poly Back Tufted Pad Driver  
#2895201 15" Poly Back Nylon Fill Scrub Brush - *Light to medium scrub*

## 17" Pad Drivers & Brushes

- #2897211 17" Poly Back Tufted Pad Driver  
#2897601 17" Structural Foam Pad Driver  
#2897201 17" Poly Back Nylon Fill Scrub Brush - *Light to medium scrub*  
#2897711 17" Poly Back Nylo Grit Fill Scrub Brush - *Heavy concrete scrub*  
#2897821 17" Poly Back Nylon-Soft Scrub Brush (Carpet Only)  
#2897901 17" Poly Back Scrub Grit Brush - *Mild to medium scrub*



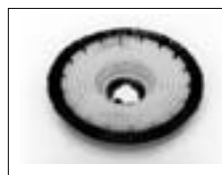
#2892601



#2897711

## 20" Pad Drivers & Brushes

- #2892211 20" Poly Back Tufted Pad Driver  
#2892601 20" Structural Foam Pad Driver  
#2892031 20" Wood back Bassine Scrub Brush - *General scrub*  
#2892201 20" Poly Back Nylon Fill Scrub Brush - *Light to medium scrub*  
#2892651 20" Poly Back Fill Scrub Brush with Glide for Carpet Shampooing  
#2892701 20" Poly Brush, Shower Feed - *Standard carpet scrub*  
#2892711 20" Poly Back Nylo Grit Fill Scrub Brush - *Heavy concrete scrub*



#2892201



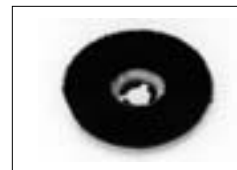
#2892211

## 17" And 20" Mustang Pad Drivers

- #2897801 17" Plastic Block Tufted Pad Driver - Mustang (without center holder)  
#2892801 20" Plastic Block Tufted Pad Driver - Mustang (without center holder)



#2892701



#2892031

## Clutch Plates

- #2893001 Aluminum Clutch Plate, 4" Diameter, 3 Holes  
#2890981 Plastic Clutch Plate, 4" Diameter, 3 Holes  
#2890991 Aluminum Clutch Plate, 5" Diameter, 6 Holes  
#2890101 Plastic Clutch Plate, 5" Diameter, 6 Holes  
#2890971 Plastic Clutch Plate, 5" Diameter, 6 Holes



#2890981



#2892651

## Floor Machine Tanks (Fits All Models)

- #5094771 Deluxe Solution Tank - 3.5 Gallon With Brass Valves



#5094771

## Battery Burnisher Accessories

- #6497159 Sulky Ride-on Attachment Kit (Field install for burnishers built that are sulky-ready. **Slant top battery burnishers only.**)  
#6497129 Sulky Ride-on Attachment Kit (Field install for burnishers built that are not sulky-ready. **Slant top battery burnishers only.**)



#5094771



#2892901

## Pad Cups

- #2795231 Split Retainer, Pad Holder Ring Only, Black Pad Cup - *Used on Wrangler® 24, Wrangler® 26 & Wrangler 27/33.*  
#4495481 Yellow Pad Cup Only- *Used on Wrangler® 20s, Electric Charger 2500, Charger 2000BP & Wrangler® 17s.*  
#5297691 Center Lock Base  
#5294151 Black Pad Cup - *Used on Charger 1500 (For Use With Twist Fasteners).*  
#5990731 Cream Pad Cup (includes Base) - *Used on Warhorse models and current Mustang 1500.*  
#5990611 Blue Pad Cup Only - *Used on older Mustang 1500.*



#6497159



#2890101

# AUTOMATIC SCRUBBER ACCESSORIES

## Champ 3529

- #7693511 18" Pad Driver (Includes Pad Holder & Ring Assembly)
- #7693521 18" Polyblock Nylon Brush
- #7693531 18" Polyblock Stratagrit Brush
- #7693541 18" Polyblock Scrub Grit Brush
- #7693959 Bumper Assembly Kit - Field Install
- #7691839 Headlight Kit - Field Install
- #7691829 Overhead Flashing Light Kit - Field Install



#7693511

## Champ 2929

- #7691491 15" Pad Driver (Includes Pad Holder & Split Retainer)
- #7691501 15" Polyblock Bassine Brush - FSO\*
- #7691511 15" Polyblock Nylon Brush
- #7691521 15" Polyblock Stratagrit Brush
- #7691531 15" Scrub Grit Brush
- #7691839 Headlight - Field Install
- #7691829 Overhead Flashing Light - Field Install



#7691521

## Wrangler® 3330 DB

- #3390891 17" Polyblock Tuft Pad Driver
- #3390511 17" Polyblock Nylon Brush - Light To Medium Scrubbing
- #3390521 17" Polyblock Nylon Grit-Filled Brush - Heavy Concrete Scrubbing
- #3390531 17" Polyblock Wire Scrub Brush
- #3390901 17" Polyblock Scrub Grit Brush - Mild To Medium Scrub (Replaces Red & Blue Pads)



#7691829 & #7691839

## Wrangler® 2730 DB

- #2792891 14" Polyblock Tuft Pad Driver
- #2792511 14" Polyblock Nylon Brush - Light To Medium Scrubbing
- #2792521 14" Polyblock Nylon Grit-Filled Brush - Heavy Concrete Scrubbing
- #2792531 14" Polyblock Wire Brush
- #2792901 14" Polyblock Scrub Grit Brush - Mild To Medium Scrub (Replaces Red & Blue Pads)

## Wrangler® 2625 DB

- #2694491 13" Polyblock Tuft Pad Driver
- #2694511 13" Polyblock Nylon Brush - Light To Medium Scrubbing
- #2694521 13" Polyblock Nylon Grit-Filled Brush - Heavy Concrete Scrubbing
- #2694481 13" Polyblock Scrub Grit Brush - Mild To Medium Scrub (Replaces Red And Blue Pads)



#7692141

## Wrangler® 2016 DB/AB & Wrangler® 2008 AB

- #2892601 20" Structural Foam Pad Driver With Pad Holding Cup
- #2892711 20" Polyblock Nylon Grit Fill Scrub Brush
- #2892901 20" Polyblock Scrub Grit Brush
- #2892201 20" Polyblock Nylon Fill Scrub Brush
- #2892031 20" Wood Back Bassine Scrub Brush
- #2892701 20" Poly Brush, Shower Feed

## Wrangler® 1708 AB

- #2897601 17" Structural Foam Pad Driver
- #2897211 17" Plastic Back Poly Tuft Pad Driver With Cup
- #2897201 17" Polyblock Nylon Fill Scrub Brush
- #2897711 17" Polyblock Nylon Grit Fill Scrub Brush
- #2897901 17" Polyblock Scrub Grit Brush

## Auto Scrubber Accessories

- #7692141 Auto-Fill Battery Watering System (Only Available For Champ and Wrangler® Models With 325-395 AH Crown 6-Volt Batteries With Bayonet-Style Caps)
- #7692181 6V Low-Water Battery Alarm (Battery Acid Level Sensor That Is Compatible With Any Battery That Has A Bayonet-Style Cap)
- #7692261 12V Low-Water Battery Alarm (Battery Acid Level Sensor That Is Compatible With Any Battery That Has A Bayonet-Style Cap)
- #2690519 Key Switch Assembly - Wrangler® 27/33 (Field Install)
- #2690529 Key Switch Assembly - Wrangler® 27/33 (Factory Install)
- #2795739 Hour Meter Assembly, 36-Volt (Field Install)



#7692181

# PRESSURE WASHER ACCESSORIES

## **Extension Hoses** (Use Only With AquaForce Machines)

- #7790091 20' Extension Hose
- #7790081 40' Extension Hose
- #7790101 40' Hot-Water Extension Hose Kit (For 1450SHDE and 1500SHDE)
- #7790111 50' Extension Hose
- #7790121 100' Extension Hose

## **Turbo Tips** (Use Only With AquaForce Machines)

- #7790051 #3.5 Turbo Laser Tip
- #7790061 #4 Turbo Laser Tip
- #7790071 #5 Turbo Laser Tip

## **Transport Cart** (Use Only With AquaForce 1500 & 1500AHT)

- #7790141 Transport Cart For AquaForce 1500 & 1500AHT, Includes Chemical Dispenser Holder

## **Flat Surface Cleaners** (Use Only With AquaForce Machines)

- #7790021 12" Flat Surface Cleaner (For Sidewalks, Parking Lots, Etc.)
- #7790031 21" Flat Surface Cleaner (For Sidewalks, Parking Lots, Etc.)

## **Accessories** (Use Only With AquaForce Machines)

- #7790011 7" Rotating Scrubber Brush
- #7790131 24" Adjustable Brush Extension
- #7790041 Foamer - Chemical Dispenser That Fits Mid-Wand For Adding Cleaning Solution To Pressure Washing



#7790141



#7790021 & #7790031



#7790041



#7790011



Example - Extension Hose



Example - Turbo Laser Tip

# FLOOR PADS

Order one part number below and receive 5 pads (except where noted).

## BURNISHING (175 to 3000 RPM)

### NSS LITE BLUE POLISH/BURNISH (175 to 3000 RPM)

**Soft Finishes:** Use to polish or spray buff at low rpms or burnish at high rpms.

- #7991351 13" NSS Lite Blue Polish/Burnish Pad
- #7991451 14" NSS Lite Blue Polish/Burnish Pad
- #7991551 15" NSS Lite Blue Polish/Burnish Pad
- #7991751 17" NSS Lite Blue Polish/Burnish Pad
- #7991931 18" NSS Lite Blue Polish/Burnish Pad
- #7992051 20" NSS Lite Blue Polish/Burnish Pad
- #7992151 21" NSS Lite Blue Polish/Burnish Pad
- #7992751 27" NSS Lite Blue Polish/Burnish Pad



### NSS LITE HAIR (1000 to 3000 RPM)

**All Finishes:** Light hair pad for burnishing only.

- #7992061 20" NSS Lite Hair Pad
- #7992161 21" NSS Lite Hair Pad
- #7992761 27" NSS Lite Hair Pad

### NSS ULTRA HAIR (1000 to 3000 RPM)

**Hard Finishes:** Heavy hair pad for aggressive burnishing only.

- #7991941 18" NSS Ultra Hair Pad
- #7992081 20" NSS Ultra Hair Pad
- #7992181 21" NSS Ultra Hair Pad
- #7992781 27" NSS Ultra Hair Pad

### NSS ULTIMATE HAIR (1000 to 3000 RPM)

**Hard Finishes:** Synthetic hair pad containing extra binding materials.

Specifically designed for large diameter and high rpm pads.  
Use for aggressive burnishing.

- #7992091 20" NSS Ultimate Hair Pad
- #7992191 21" NSS Ultimate Hair Pad
- #7992791 27" NSS Ultimate Hair Pad

## SCRUBBING (150 to 300 RPM)

### NSS UHS CLEANBUFF (Up to 300 RPM)

**All Finishes:** Characteristics of a Blue & Red Pad. Remove scuff marks, not finish. Use for light cleaning and polishing. Use wet.

- #7991341 13" NSS UHS CleanBuff Pad
- #7991441 14" NSS UHS CleanBuff Pad
- #7991541 15" NSS UHS CleanBuff Pad
- #7991741 17" NSS UHS CleanBuff Pad
- #7992041 20" NSS UHS CleanBuff Pad

### NSS BLUE SCRUB (Up to 300 RPM)

**All Finishes:** Use for top scrub and light finish removal.

- #7991331 13" NSS Blue Scrub Pad
- #7991431 14" NSS Blue Scrub Pad
- #7991731 17" NSS Blue Scrub Pad
- #7992031 20" NSS Blue Scrub Pad

### NSS GREEN SCRUB (Up to 300 RPM)

**All Finishes:** Ideal for heavy finish removal.

- #7991321 13" NSS Green Scrub Pad
- #7991421 14" NSS Green Scrub Pad
- #7991521 15" NSS Green Scrub Pad
- #7991721 17" NSS Green Scrub Pad
- #7991911 18" NSS Green Scrub Pad
- #7992021 20" NSS Green Scrub Pad

## STRIPPING (150 to 300 RPM)

### NSS BLACK STRIP (Up to 300 RPM)

**All Finishes:** Removes finish completely.

- #7991301 13" NSS Black Strip Pad
- #7991401 14" NSS Black Strip Pad
- #7991501 15" NSS Black Strip Pad
- #7991701 17" NSS Black Strip Pad
- #7991901 18" NSS Black Strip Pad
- #7992001 20" NSS Black Strip Pad

### NSS BROWN STRIP (Up to 300 RPM)

**All Finishes:** Removes finish completely.

- #7992011 20" NSS Brown Strip Pad

## DO NO HARM™ ECOSTRIP PADS

Stripping pads; remove yellow top coats with just water, leaving a surface that is ready for additional finish or burnishing. Ecostrip pads use an abrasive coating not found in other stripping pads.

- #7990011 13" Do No Harm Ecostrip pad, case of 10
- #7990051 14" Do No Harm Ecostrip pad, case of 10
- #7990021 15" Do No Harm Ecostrip pad, case of 10
- #7990031 17" Do No Harm Ecostrip pad, case of 10
- #7990041 20" Do No Harm Ecostrip pad, case of 10
- #7990061 4.625" x 10" Do No Harm Ecostrip corner pad, case of 48

## TWISTER PADS

The TWISTER system features patented cleaning and polishing pads as well as special formulated cleaner to scrub, maintain, and polish concrete and stone floors.

- #7991361 TWISTER 13" green pad, two pack
- #7991371 TWISTER 13" yellow pad, two pack
- #7991381 TWISTER 13" white pad, two pack
- #7991031 TWISTER 13" red pad, two pack
- #7991391 TWISTER 13" Starter kit with 1 white, yellow, and green pad
  
- #7991461 TWISTER 14" green pad, two pack
- #7991471 TWISTER 14" yellow pad, two pack
- #7991481 TWISTER 14" white pad, two pack
- #7991041 TWISTER 14" red pad
- #7991491 TWISTER 14" Starter kit with 1 white, yellow, and green pads
  
- #7991561 TWISTER 15" green pad, two pack
- #7991571 TWISTER 15" yellow pad, two pack
- #7991491 TWISTER 15" white pad, two pack
- #7991051 TWISTER 15" red pad
- #7991601 TWISTER 15" Starter kit with 1 white, yellow, and green pads
  
- #7991761 TWISTER 17" green pad, two pack
- #7991771 TWISTER 17" yellow pad, two pack
- #7991791 TWISTER 17" white pad, two pack
- #7991801 TWISTER 17" red pad
- #7991691 TWISTER 17" Starter kit with 1 white, yellow, and green pads
  
- #7991811 TWISTER 18" green pad, two pack
- #7991821 TWISTER 18" yellow pad, two pack
- #7991831 TWISTER 18" white pad, two pack
- #7991841 TWISTER 18" red pad
- #7991851 TWISTER 18" Starter kit with 1 white, yellow, and green pads
  
- #7992101 TWISTER 20" green pad, two pack
- #7992121 TWISTER 20" yellow pad, two pack
- #7992131 TWISTER 20" white pad, two pack
- #7992411 TWISTER 20" red pad
- #7992201 TWISTER 20" Starter kit with 1 white, yellow, and green pads
  
- #7992711 TWISTER 27" green pad, two pack
- #7992721 TWISTER 27" yellow pad, two pack
- #7992731 TWISTER 27" white pad, two pack
- #7992741 TWISTER 27" red pad
- #7992701 TWISTER 27" Starter kit with 1 white, yellow, and green pads
  
- #7991011 TWISTER Cleaner, 1 gallon, 3 pack



**NSS Enterprises, Inc.**  
3115 Frenchmens Road  
Toledo, OH 43607-2958  
USA

P: (800) 677-1663  
F: (419) 531-3761

[mailus@nss.com](mailto:mailus@nss.com)  
[www.nss.com](http://www.nss.com)

Specifications subject to change without notice.

Part # 9091002 REV C 2/09