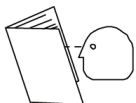


# Wrangler 1503 AB / AE Automatic Scrubbers



## OPERATOR MAINTENANCE AND SAFETY INSTRUCTIONS

**WARNING:** Failure to observe these instructions can cause personal injury to machine operator or bystanders.



Read and understand all instructions in the Operation Manual prior to using the machine.



**WARNING:** Batteries emit hydrogen, which can cause fire or explosion. NEVER smoke, light a match, or cause a spark during operation or charging. ALWAYS charge in a well-ventilated area away from open flame.



Poison. Causes severe burns. Avoid contact.



Shock or electrocution hazard.



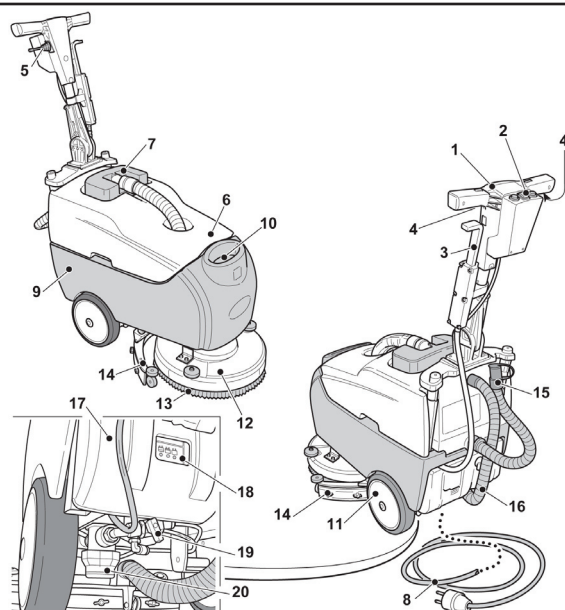
**Batteries Contain Acid. Avoid Contact. If contact with battery acid occurs, follow these instructions:**

- SKIN - Rinse area with water.
- EYES - Flush with water for 15 minutes.
- INTERNAL - Drink water or milk. Follow with Milk Of Magnesia, beaten egg or vegetable oil. Call a physician immediately.



ALWAYS wear eye protection, rubber gloves, and protective clothing to avoid contact with battery acid.

### OPERATION COMPONENTS



1. Guide handle.
2. Control console.
3. Squeegee activation lever.
4. Lever to start brush rotation and/or dispensing water.
5. Handle position lever.
6. Recovery tank.
7. Recovery tank cover.
8. Power cord (AE version).
9. Solution tank.
10. Solution fill port.

11. Wheels.
12. Brush deck.
13. Brush.
14. Squeegee.
15. Recovery tank drain hose.
16. Squeegee suction hose.
17. Battery charger.
18. Battery charger indicator.
19. Solution flow lever.
20. Solution filter.

### MAINTENANCE

Always turn OFF all machine switches before performing any maintenance or repairs.

#### Daily Maintenance

- Always remove pads and brushes after each use. Rinse out and hang to dry.
- Empty and rinse out the recovery tank. Allow tank to air dry.
- Check and clean the float assembly as required.
- Recharge the batteries at the end of every shift or anytime the machine is not in use.
- Remove the squeegee assembly, inspect for damage, and clean as necessary.

#### Monthly Maintenance

- Inspect all fasteners (bolts, screws, nuts) at mechanical linkages, pivot points, and ball joints for tightness. Tighten as needed.
- Clean body components to remove chemical and liquid residue to maintain a "like new" appearance.
- Equalize the batteries. See the operation manual for the correct procedure.

### Battery Charging

- Recharge the batteries at end of every shift, when indicated by the battery meter, or anytime the machine is not in use.
- Connect the battery charger power cord into the battery charger then into a grounded AC outlet of the proper voltage.
- If the battery charger will not start operating, check the plug connections and the battery cable connections.
- See operating manual for detailed charging instructions.



**NSS Enterprises, Inc.**  
3115 Frenchmens Road, Toledo, OH 43607  
Phone (419) 531-2121 Fax (419) 531-3761

Please note the machine's specifications and appearances contained herein are subject to change without notice. Contact your NSS representative for the latest information on specific models.